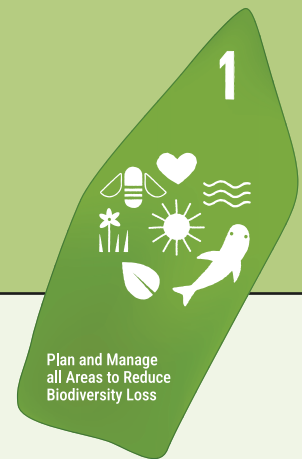


Target 01:

Plan and Manage all Areas to Reduce Biodiversity Loss.



WHY THIS MATTERS FOR INDIGENOUS PEOPLES

Participatory spatial mapping under Target 1 can either empower Indigenous Peoples by recognising their rights and priorities, or harm them if imposed without rights-based, meaningful participation.

Land-use and sea-use change - for example cutting down forests for industrial agriculture or extracting oil and gas from the seabed - are major drivers of biodiversity loss. This land-use and sea-use change often has significant negative impacts on Indigenous Peoples, since a large proportion of the world's remaining biodiversity is within Indigenous territories. The desire to have too much of lands, waters, oceans and their resources, and conflict over their use, continue to harm biodiversity and Indigenous Peoples.

To reduce biodiversity loss caused by land- and sea-use change, Target 1 requires all governments to carry out integrated and participatory **spatial planning** (or other effective management processes) for all their lands and sea areas.

Integrated spatial planning means it considers all the different ways the land is (or could be) used. Participatory spatial planning means it is a process which involves bringing **rightsholders** and **stakeholders** together to map out and agree on the use of land for different purposes, balancing between different interests.

Spatial planning processes can help Indigenous Peoples get better recognition of their territories, of how they use them (for example their **customary sustainable use**), and of their priorities for the future. However, these processes can also threaten Indigenous Peoples' rights to their territories and resources. This is likely to be the case if they do not start from a basis of recognition of rights, are too top-down or large-scale, do not enable meaningful participation by Indigenous Peoples or do not recognise Indigenous Peoples as the primary decision-makers for their own territories.



Conservation and mapping, Kenya. Credit: Lewis Davies

Taking part in participatory spatial planning processes that are bottom-up and respect Indigenous Peoples' rights as part of Target 1 offers an important opportunity for Indigenous Peoples to get their lands, knowledges and priorities recognised within local, national, regional and global planning processes.

Many Indigenous Peoples already take part in spatial planning of their territories in ways that respect and support nature and biodiversity. Indigenous Peoples also often bring different values and perspectives to discussions of priorities for spatial planning, for example in relation to balancing economic interests with nature and well-being.

[> GO BACK TO MENU](#)

SOME QUESTIONS TO CONSIDER



How do Indigenous men and women contribute differently to territorial management?

Are both men and women equally able to participate in external spatial planning processes?



OFFICIAL CBD TARGET TEXT

Ensure that all areas are under participatory, integrated and biodiversity inclusive spatial planning and/or effective management processes addressing land- and sea-use change, to bring the loss of areas of high biodiversity importance, including ecosystems of high ecological integrity, close to zero by 2030, while respecting the rights of indigenous peoples and local communities.